

## NESTED BIB PATTERN



### **MATERIALS NEEDED:**

1/2 yard fabric  
Bias Tape 1/4" wide  
3/4" Velcro dot set  
Thread

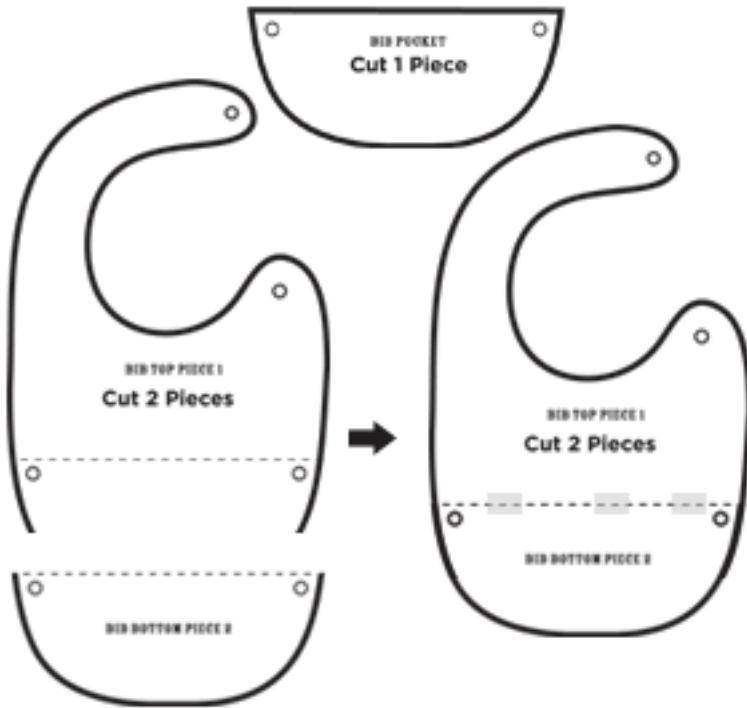
\* Like this fabric?  
Look for it at Repro Depot:  
<http://reprodepotfabrics.com/aplprb.html>

# INSTRUCTIONS

## STEP 1

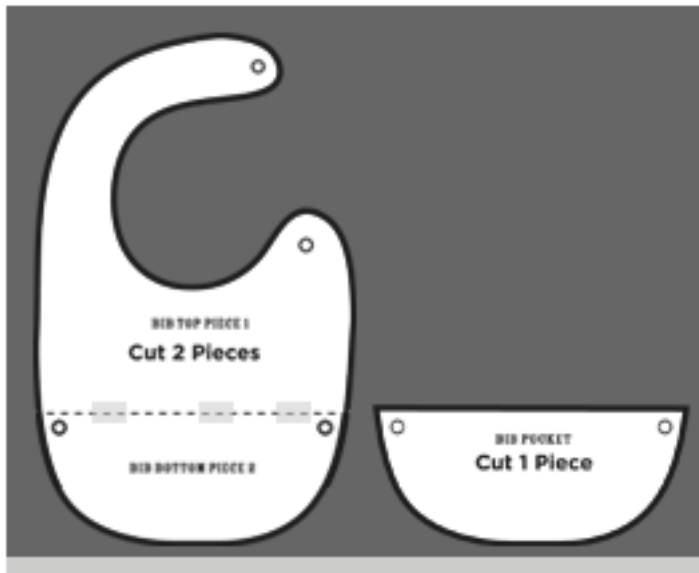
Cut printed pattern pieces from paper. To form the full bib pattern, overlay bib top with bib bottom on dotted line and tape.

You will now have two pieces: a bib pocket and a full bib.



## STEP 2

Place the pattern pieces on your fabric which has been doubled up so wrong sides of the fabric are touching each other. Cut out the full bib piece. Then, cut out the bib pocket -- you only need one bib pocket piece.

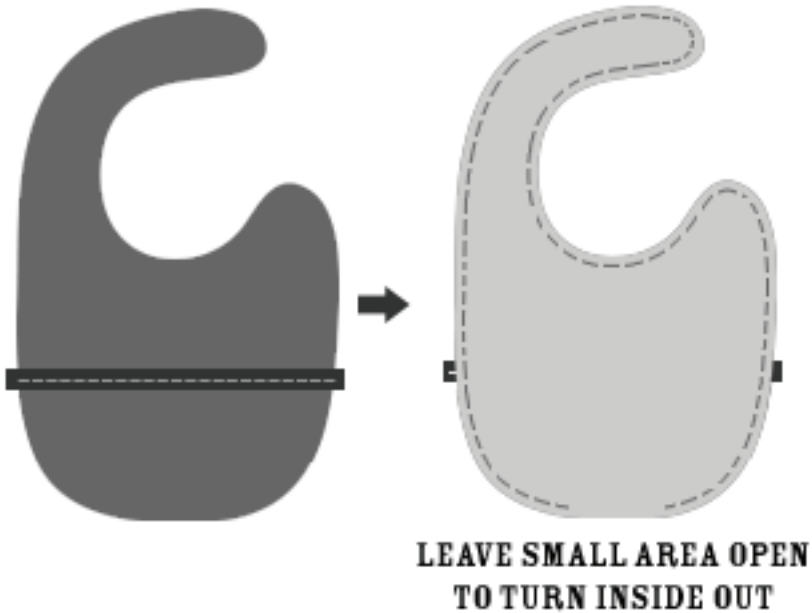


## BASTE, THEN STITCH BIAS TAPE



## STEP 3

Encase your bib pocket piece with bias tape. To do this, open your bias tape and tuck the bib pocket edge under the tape until the top edge of the pocket meets the fold of the tape. Baste, then stitch the tape onto the bib pocket piece.



## STEP 4

Place pocket on top of one of the bib pieces so that wrong side of pocket piece fabric is touching the right side of bib piece fabric.

Next, make a “sandwich” by placing the other bib piece on top of the bib/pocket. The right side of both bib piece fabrics should be touching each other.

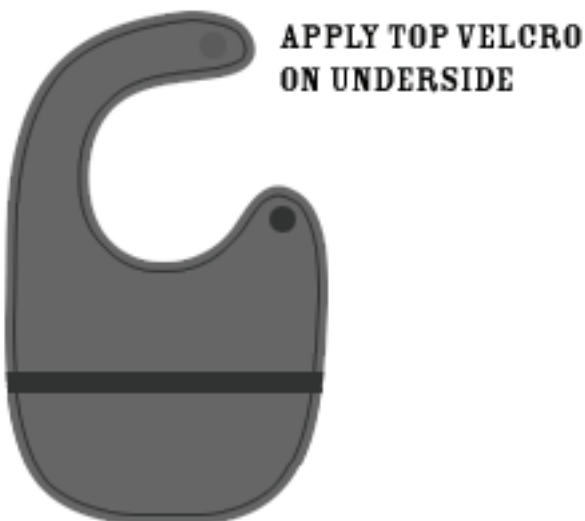
Stitch perimeter of bib, leaving a slight hole open so that you’ll be able to turn bib inside out.



## STEP 5

Once you have turned bib inside out, fold in the area you left open so that no raw seams are exposed. Then, handstitch the area closed.

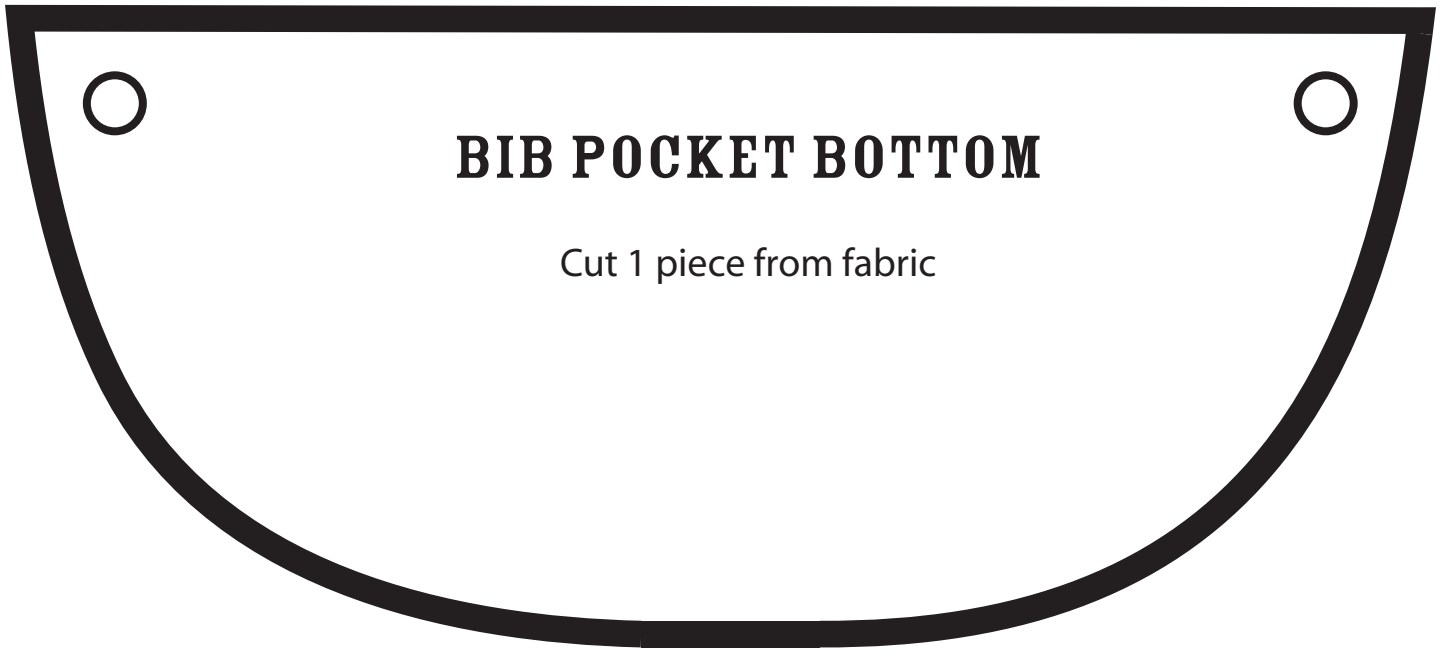
Once again, stitch the perimeter of the bib to reinforce the bib.



## STEP 6

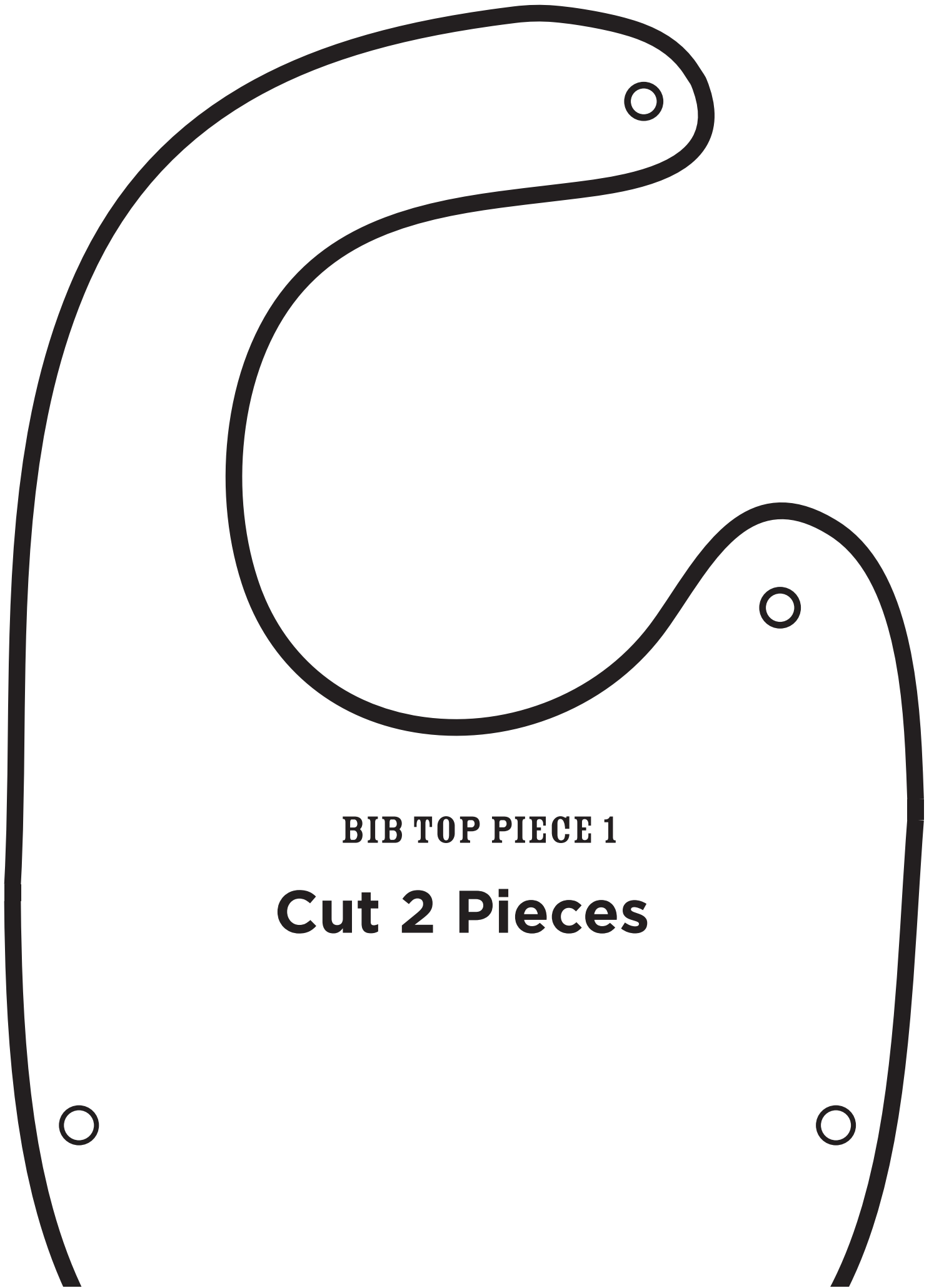
Now, apply the Velcro to the bib. The “fuzzy” piece of Velcro should be applied to the bottom half of the bib, while the “scratchy” piece should be applied to the top underside.

Secure Velcro by sewing onto bib.



**BIB POCKET BOTTOM**

Cut 1 piece from fabric



**BIB TOP PIECE 1**

**Cut 2 Pieces**

Cut bib bottom piece 2 printout and join with tape to bib top piece 1 printout to form complete bib pattern piece.



**BIB BOTTOM PIECE 2**